

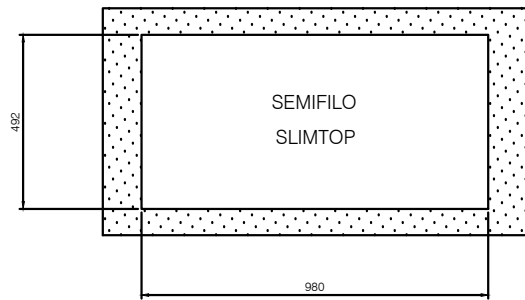
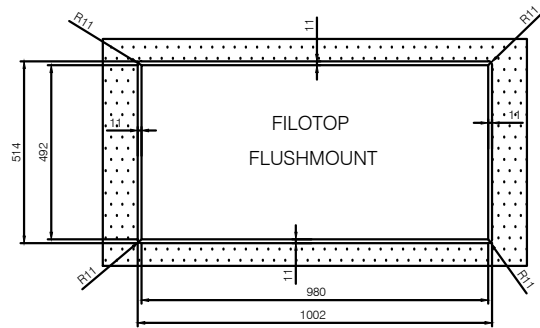
1002

R11

- Dimensioni foratura top
- Cut-out sizes
- Dimensions de découpe
- Dimensiones de corte
- Ausschnittmaße

PPX 211 B - PPX251 B

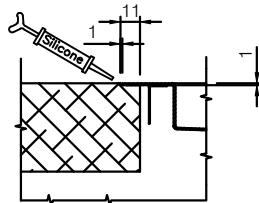
- Dima per foratura top
- Template worktop cut-out
- Gabarit de découpe
- Plantilla de corte
- Schablone für Ausschnitt



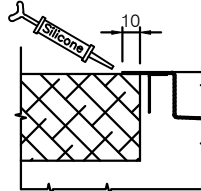
PART. A

- Si raccomanda sigillatura con silicone
- Silicone recommended
- Assure l'étanchéité au silicone
- Silicona
- Silikonabdichtung ist empfehlenswert

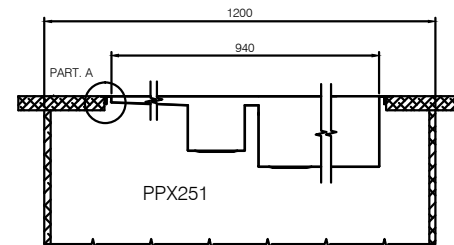
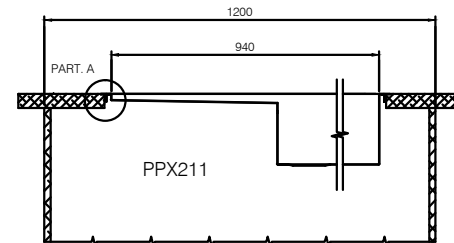
(FILOTOP-FLUSHMOUNT)



(SEMIFILO/SLIMTOP)



- Base mm 1200
- Cabinet mm 1200
- Caisson mm 1200
- Mueble mm 1200
- Unterschrank mm 1200



514

COD. 993.0256.807
 BARCODE EAN 13
 76 12980 89718 6