



# **SATURN ARC**

## SINK MIXER INSTALLATION GUIDE



# Sink Mixer Installation

**Installation must be carried out by a certified plumber.**

- Ensure that the water feed is a balanced pressure and a maximum 600kpa.
- Hot water feed should be plumbed on the right and cold water feed on the left.
- In case of a pillar mixer the handle must be on the right with cold water connected on the front and hot on the back.
- Both hot and cold water lines are to be flushed properly of foreign matter prior to fitting the mixer to ensure no damage to the ceramic cartridge surfaces.
- Allow a 35mm hole in the sink or deck for Franke sink mixers.
- In-line strainers must be installed on all installations to ensure no additional foreign materials damage the ceramic cartridge.
- Flexible connectors should be fitted to the mixer using a combination or shifting spanner. The 1/2" female nut should be fitted to an angle valve. Special care must be taken to ensure the washer is not damaged due to over tightening or twisting of the flexible connector. Failing to adhere to the above installation instructions will deem your warranty null and void.

# Franke Sink Mixer Warranty

This warranty is valid for 10 years from date of retail purchase on mixer body construction and 2 years on the mixer cartridge. Franke warrants products free of manufacturing defects. The warranty is for defective products and no claim can be made due to incorrect installation. The warranty does not include normal wear and tear and abuse of the product. Franke South Africa will not be held liable for any damages, of any nature, including but not encompassing, consequential or indirect loss arising from any defects. Proof of purchase is required when lodging a claim. Visit our website: [www.franke.co.za](http://www.franke.co.za) for terms and conditions.



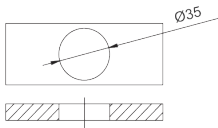
Scan this QR code for a direct link to our Warranty Claim form.

**10 YEARS**  
WARRANTY on body construction

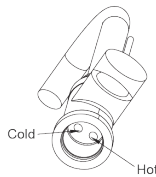
**2 YEARS**  
WARRANTY on ceramic cartridge

## INSTALLATION

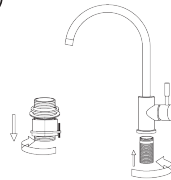
①



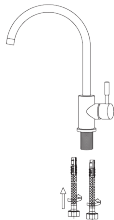
②



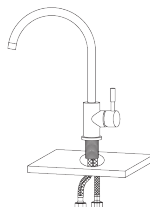
③



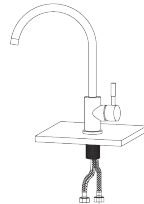
④



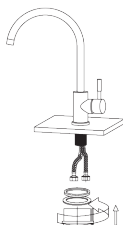
⑤



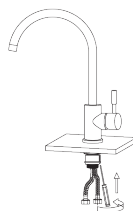
⑥



⑦



⑧



⑨



\*Images for representation purposes only



**FRANKE SOUTH AFRICA**

**CALL CENTRE**

Tel 031 001 5000

[HS-enquiry-fsa.za@franke.com](mailto:HS-enquiry-fsa.za@franke.com)

[www.franke.co.za](http://www.franke.co.za)

**DURBAN**

1194 South Coast Road,

Mobeni, Durban, 4092.

South Africa

Tel +27 31 450 6300

**GAUTENG**

82 Morkels Close,

Unit B, Capital Hill

Halfway House

Midrand, 1685

South Africa

**CAPE TOWN**

Unit 1, Gold Street,

Northgate Business Park,

Northgate Estate,

Cape Town, 7405

South Africa