

*Make
it
Wonderful*

FRANKE

SATURN ARC SWIVEL

SINK MIXER INSTALLATION GUIDE



SINK MIXER INSTALLATION



Installation must be carried out by a certified plumber.

- Ensure that the water feed is a balanced pressure and a maximum 600kpa.
- Hot water feed should be plumbed on the left and cold water feed on the right.
- In case of a Pillar mixer the handle must be on the right with cold water connected on the front and hot on the back.
- Both Hot and cold water lines are to be flushed properly of foreign matter prior to fitting the mixer to ensure no damage to the ceramic cartridge surfaces.
- Allow a 35mm hole in sink or deck for Franke sink mixers.
- In-line strainers must be Installed on all installations to ensure no additional foreign materials damage the ceramic cartridge.
- Flexible connectors should be fitted to the mixer using a combination or shifting spanner. The 1/2" female nut should be fitted to an angle valve. Special care must be taken to ensure the washer is not damaged due to over tightening or twisting of the flexible connector. Failing to adhere to the above installation instructions will deem your warranty null and void.

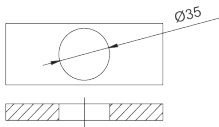
FRANKE SINK MIXER WARRANTY

This warranty is valid for 10 years from date of retail purchase on mixer body construction and 2 years on the mixer cartridge. Franke warrants products free of manufacturing defects. The warranty is for defective products and no claim can be made due to incorrect installation. The warranty does not include normal wear and tear and abuse of the product. Franke South Africa will not be held liable for any damages, of any nature, including but not encompassing, consequential or indirect loss arising from any defects. Proof of purchase is required when lodging a claim. Visit our website www.franke.co.za for terms and conditions.

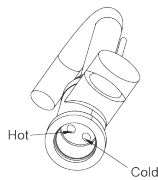


INSTALLATION

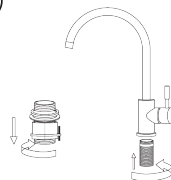
①



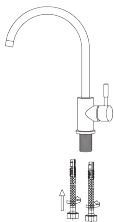
②



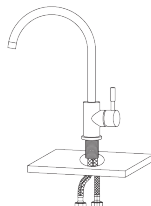
③



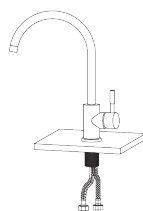
④



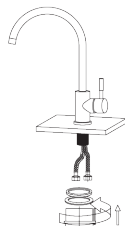
⑤



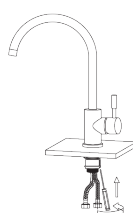
⑥



⑦



⑧



⑨





FRANKE SOUTH AFRICA

CALL CENTRE
Tel 0861 372 653
Fax 0866 592 073

callcenter.fsa@franke.com
www.franke.co.za

DURBAN
1194 South Coast Road,
Mobeni, Durban, 4092.
South Africa
Tel +27 31 450 6300
Fax +27 31 450 6304

GAUTENG
Unit 5, Platinum Close,
Tsessebe Crescent,
Sage Corporate Park South,
Midrand, Johannesburg, 1682
South Africa

CAPE TOWN
Unit 1, Gold Street,
Northgate Business Park,
Northgate Estate,
Cape Town, 7405
South Africa

DISCLAIMER

The information and dates supplied in this brochure are based on the information believed to be reliable, however are not binding and inaccuracies may occur. Franke reserves the right to change Specification and design at any time without notice.

© 2018 by Franke South Africa. All rights reserved under the Copyright Act of 1987 with the amendments. Reproduction of any of the content, full or partial, is allowed only with prior written approval of Franke South Africa. No reasonable requests will be refused provided the conditions as laid out are met.



MAKE IT WONDERFUL